

# Global Spatial Data Infrastructure Latin America and the Caribbean Newsletter

SDI-LAC

August 2009

Vol. 6, No. 8

Spatial Data Infrastructure-Latin America and the Caribbean (SDI-LAC) is a regional, monthly, and free, electronic newsletter from the [Global Spatial Data Infrastructure Association](#) (GSDI). It focuses on aspects related with Spatial Data Infrastructure, and on GIS, remote sensing, and data management issues, related with SDI in Latin America and the Caribbean. It aims to raise awareness, provide useful information to strengthen national SDI initiatives, and support synchronization of regional efforts.



[GSDI Definition](#)

The [Pan-American Institute of Geography and History](#) (PAIGH), member organization of GSDI, and the [Permanent Committee on Geospatial Data Infrastructure for the Americas](#) (PC-IDEA), promote SDI development in the region. The newsletter is prepared by PAIGH for GSDI.

[Message from the Editor](#)

[Input to this Issue](#)

[SDI News, Links, Papers, Presentations](#)

[Articles and Books of the Month](#)

[Geospatial Research and Applications](#)

[GIS Tools, Software, Data](#)

[Training Opportunities](#)

[Funding Opportunities, Awards, Support](#)

[Employment Opportunities](#)

[Other](#)

[Americas: Conferences, SDI Events](#)



## Message from the Editor

We are pleased to welcome Carlene Boodoo, Research Assistant at the University of West Indies (UWI), currently advancing her MSc in Geoinformatics at UWI, as correspondent member to SDI-LAC Newsletter for Trinidad and Tobago!

Now, SDI-LAC Newsletter is available in Portuguese! Portuguese Translation of SDI-LAC is possible thanks to Eduardo Freitas-Oliveira, a cartographic engineer, MSc in GIS, editor of MundoGEO Web Portal and InfoGEO Magazine.

Due to an increasing volume of information on events, the respective section will be restricted to those events taking place in the Americas. However, for "The Rest of the World: Conferences, SDI Events", please find a link to upcoming events of global or major international interest in GSDI webpage at: <http://www.gsdi.org/events/upcnf.asp>

If you have news or information related to GIS, remote sensing, and Spatial Data Infrastructure that you would like to highlight (e.g., projects, conferences, workshop announcements, publications, reports, websites of interest, etc.), kindly send them in. We would be happy to include them in the newsletter. We also encourage you to send to the editor your comments and suggestions for the continuous improvement of SDI-LAC Newsletter. **PLEASE share this newsletter with colleagues who may find the information useful, and ideally they will subscribe themselves.**

Back issues of the newsletter are at the GSDI website: <http://www.gsdi.org/newsletters.asp>

Editor, Nancy Aguirre, Pan-American Institute of Geography and History (PAIGH), <http://www.ipgh.org>, [cnaguirre@ipgh.org](mailto:cnaguirre@ipgh.org)

SDI-LAC Newsletter



Vol. 6, No.8

# Global Spatial Data Infrastructure Latin America and the Caribbean Newsletter

## Input to this Issue

### Thank you for their contributions to this issue of the SDI-LAC newsletter to:

Sergio Acosta y Lara	Department of Geographic Information, National Bureau of Surveying - MTOP, SDI Working Group (GTIDE-AGESIC), Uruguay
Suchith Anand	Centre for Geospatial Science, University of Nottingham, UK
Carlene Bodoo	SDI-LAC Correspondent member, Trinidad and Tobago
Helena Boniatti	Regional Officer, Latin America and the Caribbean, UNEP-World Conservation Monitoring Centre / UNEP Brazil Office, Brasilia, Brazil
Santiago Borrero	Secretary General, Pan-American Institute of Geography and History, PAIGH; Mexico
Steeve Ebener	SALB co-ordination Office, WHO, Geneva, Switzerland
Roxana Segundo	Development and International Cooperation Officer, CATHALAC, Panama
Joerg Szarzynski	United Nations Office for Outer Space Affairs, UN-SPIDER Bonn Office, Germany
Jeroen Ticheler	GeoCat bv, Grotenhuisweg, The Netherlands
Eric van Praag	GeoSUR Program Coordinator, Venezuela

[\(Back to Top\)](#)

## SDI News, Links, Papers, Presentations

### Launch of the “SPIDER Global Thematic Partnership”

Source: UN-SPIDER June 2009 Updates



The Second Session of the Global Platform for Disaster Risk Reduction took place in Geneva on 15-19 June 2009. At the session, UN-SPIDER culminated its year-long effort towards the establishment of the “SPIDER Global Thematic Partnership”. This partnership will serve as a forum to facilitate networking among the global community of practitioners involved in space-based information and services to support disaster risk management. UN-SPIDER is launching this Global Thematic Partnership as an effort to facilitate the access to space-based information for disaster reduction, in line with efforts conducted by the International Strategy for Disaster Reduction (ISDR), in particular to support national and regional platforms in their activities regarding disaster risk reduction. If your institution is interested in joining this Partnership please contact Mr. Juan Carlos Villagran ([juan-carlos.villagran@unoosa.org](mailto:juan-carlos.villagran@unoosa.org)). For more information please log on to: [ISDR](#)

### OGC Releases Videos of GEOSS Interoperability Demo

Source: OGC Press Release



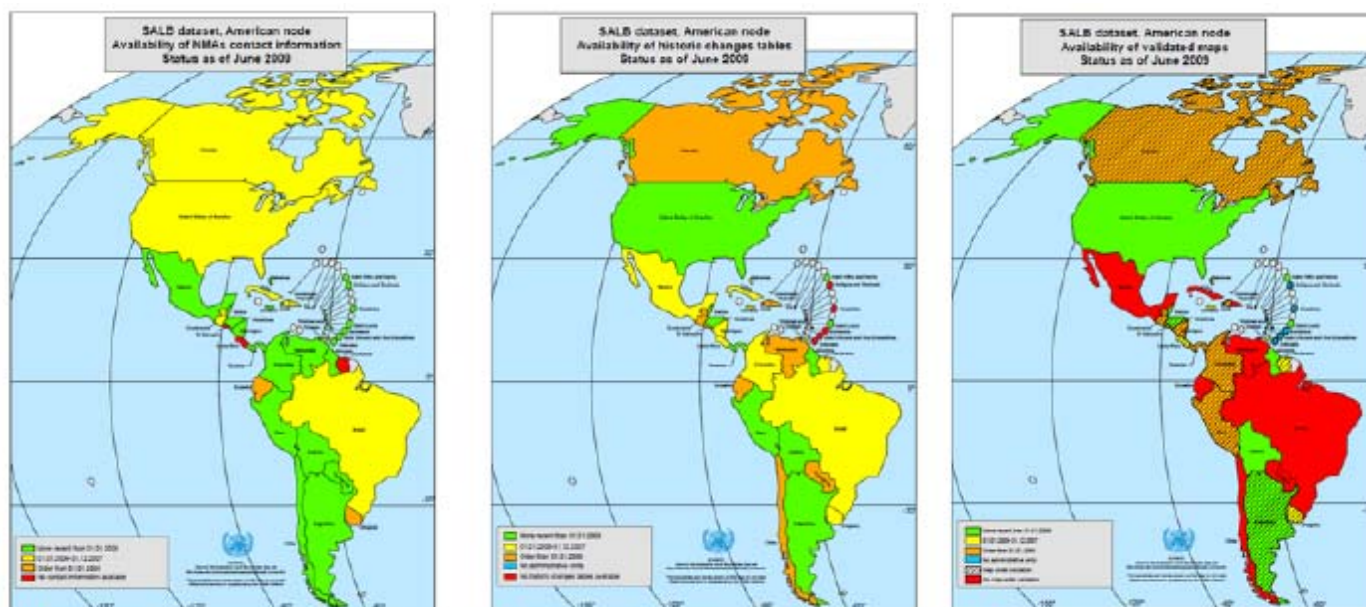
The Open Geospatial Consortium (OGC®) has posted videos of demonstrations of Phase 2 of the GEOSS Architecture Implementation Pilot (AIP-2) on the OGC website at:

## Global Spatial Data Infrastructure Latin America and the Caribbean Newsletter

<http://www.ogcnetwork.net/pub/ogcnetwork/GEOSS/AIP2/index.html>. The AIP-2 pilot activity, which began in September 2008, is a project of the GEO (Group on Earth Observations) AR-09-01b Task Team. AIP-1 demonstrated GEO Portal and Clearinghouse solutions. AIP-2 established "operational, research and technical exemplars", services that support several of the Global Earth Observation System of Systems (GEOSS) Societal Benefit Areas (SBAs): Disaster Management, Biodiversity and Climate Change, Air Quality and Health, and Renewable Energy. AIP-2 Engineering Reports will be made available to the GEOSS Best Practice Registry (<http://www.ogcnetwork.net/AIP2ERs>) for use by organizations in and outside of GEOSS. For additional information, see <http://www.ogcnetwork.net/Alpilotor> contact George Percivall, [percivall@opengeospatial.org](mailto:percivall@opengeospatial.org). [For information about this announcement, please contact: Sam Bacharach, Executive Director, Outreach and Community Adoption, Open Geospatial Consortium, [sbacharach@opengeospatial.org](mailto:sbacharach@opengeospatial.org)]

### SALB Project: State of progress for the node in the Americas

Source: SALB Newsletter June 2009, Vol. IX No. 3 by way of Steeve Ebener



The June 2009 edition of the SALB project Newsletter is now available (<http://www.unsalb.org>). The 3 maps shown above represent the state of progress of the SALB project for the countries covered by the node in the Americas in regards to the NMA contact information (left), historic changes (center) and GIS format maps (right). The full size version of these maps can be downloaded from the project overview page of the new SALB portal. The following legend applies to these maps. The territories in:

- Green correspond to those for which the information or data is more recent than the 1st of January 2008
- Yellow to those for which the most recent available information or data fall within the period 01.01.2006 - 31.12.2007
- Orange to those for which the available information or data is older than the 1st January 2006
- Red to those for which no information, nor data are available for download
- Blue to those presenting no sub national divisions

Please look at the project overview page on the SALB website for more information about the process followed by the SALB project. You can also consult the "Help us" section in this Newsletter for more details about the information we need in order to complete the coverage of the SALB data set in the Americas.



# Global Spatial Data Infrastructure Latin America and the Caribbean Newsletter

## South American Course on Production, Use and Modeling of Relief, Digital Elevation Models and High Resolution Hydrographic Maps

Source: Eric van Praag



GeoSUR Program (<http://geosur.caf.com>) contributes to the consolidation of Spatial Data Infrastructures in South America considering them strategic tools for development planning and decision making, by facilitating the dissemination and access to maps and other spatial data via Internet to support regional integration. The “South American Course on Production, Use and Modeling of Relief, Digital Elevation Models and High Resolution Hydrographic Maps”, was held on June 8-12, 2009 as part of this program at the Earth Resources Observation and Science Center of the U.S. Geological Survey in Sioux Falls, South Dakota. This workshop was funded by the Andean Corporation of Foment (in Spanish CAF) and organized by the CAF and the Pan-American Institute of Geography and History (PAIGH). The Organization of American States (OAS) contributed to the workshop

through the donation of 10 air tickets for participants. The workshop was attended by 20 specialists from 14 Latin American institutions participating in the program. During the workshop these experts gained conceptual knowledge and skills needed for map production from digital elevation models of South America, on topics such as watersheds, slope, aspect and drainage, among others. GeoSUR will soon open an online interactive service that will allow any user to perform analysis or to generate digital maps from the SRTM model of South America (at a resolution of 30 meters). Users will be able, for example, to obtain relief profiles among several altitudinal points selected to support future road construction; or to automatically produce slope maps to assess potential landslide areas. The event was reported by regional television channels affiliated with ABC, CBS and NBC in primetime. More information: Eric van Praag, GeoSUR Program Coordinator, [evanpraag@caf.com](mailto:evanpraag@caf.com)

## Public Sector Agencies that use Spatial Data in Trinidad and Tobago

Source: Carlene Bodoo

Trinidad and Tobago (T&T) has a wealth of spatial data but data users are unsure as to who has the data, what data they have and if it is available to them.

**Table 1: Public Sector Agencies**

Agency	Government Ministry
CSO (Central Statistical Office)	Ministry of Planning, Housing and the Environment
IMA (Institute of Marine Affairs)	Ministry of the Public Utilities and the Environment
Municipal Corporations	Ministry of Local Government
NGC (The National Gas Company of T&T)	Ministry of Energy and Energy Industries
ODPM (Office of Disaster Preparedness and Management)	Ministry of National Security
PETROTRIN (The Petroleum Company of T&T)	Ministry of Energy and Energy Industries
Surveying and Mapping Division	Ministry of Agriculture, Land and Marine Resources
TTEC (T&T Electricity Commission)	Ministry of Public Utilities and the Environment
WASA (Water and Sewerage Authority)	Ministry of Public Utilities and the Environment

This article would give an overview of some public sector agencies (Table 1) that are the holders of spatial data. Later issues would seek to address the fore mentioned issues by describing each agency and how they use spatial data along with GIS in the running/management of their agency.

# Global Spatial Data Infrastructure Latin America and the Caribbean Newsletter

## Belize's 1st NSDI Conference

Source: Santiago Borrero



Belize's first National Spatial Data Infrastructure (NSDI) Conference was held on July 29-30, 2009, at Galen University in San Ignacio, Belize. The Conference / Workshop was organized by the Land and Surveys Department of the Ministry of Natural Resources and the Environment of Belize, with international support by the Pan-American Institute of Geography and History (PAIGH) and NASA (Water Center for the Humid Tropics of Latin America and the Caribbean CATHALAC). The Conference agenda included among other themes: an Introduction to the NSDI Project, Objectives and Goals; Examples of Successful SDI around the World; Data and Metadata Development and Maintenance; Developing Common Standards and Discussing Challenges with Data-Access and Information Sharing; and a Plenary Discussion on What will it take to develop Belize's NSDI?

The Conference allowed the creation of NSDI committees and establishing goals for the near future.

## [ICDE Plenary Meeting, Colombia](#)

Source: <http://www.icde.org.co/>

A Plenary Meeting of the Colombian Spatial Data Infrastructure (in Spanish ICDE) was held on July 15, 2009. This meeting aimed at presenting progresses of its working groups, the contents of document CONPES 3585, the goals established by pertinent national policy, and the proposed working plan for implementing this year's goals. This plenary was very important since it allowed continuing the work developed in terms of access, production and use of geographic information at the national level, in addition to diffusing the contents and strategies of document CONPES 3585 to foster a better organization and use of geographic information in the country. Likewise, the meeting with ICDE's coordinating committee that took place on July 23, had the objective of validating and approving the annual work plan of the sectors' committees. For more information please send your inquiries to: [ide@igac.gov.co](mailto:ide@igac.gov.co)



## New Geonetwork Users List in Spanish

Source: Sergio Acosta y Lara



Following a workshop held in July 2009 by Jeroen Ticheler in Uruguay, the Geonetwork users list in Spanish was created <https://lists.sourceforge.net/lists/listinfo/geonetwork-usuarios-es>. Besides this, I'm pleased to report the recent release of Geonetwork version 2.4.0 (<http://geonetwork-opensource.org>), which was the basis for the above mentioned workshop.

## [IGM of Ecuador launches Galapagos Islands cartography](#)

Source: <http://www.geoportaligm.gov>.

The Military Geographic Institute of Ecuador (in Spanish IGM) delivered the first aerial survey of the Basic National Island Charter at scale of 1:25.000 to the Galapagos National Park based on a cooperation agreement signed between these two institutions. In addition, the information is published in IGM's Geoportal using WMS standard. You may view it [here](#).

# Global Spatial Data Infrastructure Latin America and the Caribbean Newsletter

## [US VI GIS Conference: November in St. Croix](#)

Source: CaribbeanGIS blog

The US Virgin Islands will be holding its 5th Annual GIS Conference - entitled "Efficient & Effective Spatially Enabled Services: Adapting to the Changing Landscape", on Nov 18 - 20, 2009, in St. Croix, United States Virgin Islands. See [previous conferences](#) or contact: Theresa Anduze-Parris, PhD, Annual GIS Conference Coordinator, Office of the Lieutenant Governor, (340) 773-6459 ext. 3131

## **First Latin American and Caribbean gvSIG Users Working Days: Cooperation to Grow**

Source: gvSIG Communication



Buenos Aires, Argentina will host the First Latin American and Caribbean gvSIG Users Working Days [1] between September 30 to October 2, 2009, organized by the National Geographic Institute of Argentina and the gvSIG Association, under the banner "Cooperating to Grow". This conference will serve as a meeting point for the increasing number of experts and stakeholders on free geoinformatics who are sharing experiences and exchanging ideas. It will be a turning point in consolidating the Latin American gvSIG community. During the conference there will be presentations on latest developments of the gvSIG project, as well as gvSIG applications and solutions conducted in different Latin American countries; these are projects closely following international interoperability standards which are more sustainable. Participation in these working days is open: any person or organization interested in conducting a presentation may send a proposal for its evaluation by the Scientific Committee. All information on submission of communications may be found at the Communications section of the conference website [2].

[1] <http://www.gvsig.org/web/community/events/jornadas-lac/2009/>

[2] <http://www.gvsig.org/web/community/events/jornadas-lac/2009/Comunicaciones>

## **Call for Papers, Tutorials, and Panels - GEOProcessing 2010:**

Source: <http://www.iaria.org/>

The Second International Conference on Advanced Geographic Information Systems, Applications, and Services

GEOProcessing 2010  
February 10-15, 2010 - St. Maarten, Netherlands Antilles

GEOProcessing 2010 is the Second International Conference on Advanced Geographic Information Systems, Applications, and Services. It will be held on February 10-15, 2010 in St. Maarten, Netherlands Antilles.

General page: <http://www.iaria.org/conferences2010/GEOProcessing10.html>

Call for Papers: <http://www.iaria.org/conferences2010/CfPGEOProcessing10.html>

Submission deadline: **September 10**, 2009

## [New issue of IG+, More than Geographic Information](#)

Source: <http://www.sigte.udg.edu/>

Is now Available the last digital issue (11) of *IG+ Journal*. Current issue is devoted to the Third Free GIS Working Days, held last March in Girona, Spain; we are sure it may be of interest to the entire GIS community. Publication of *IG+, More than Geographic Information* is edited by SIGTE of the University of Girona. Main objective of IG+ is to contribute towards the diffusion and transfer of GIS information to the GIS community in particular, and the society more general.



# Global Spatial Data Infrastructure Latin America and the Caribbean Newsletter

## Webcasts of OSGIS 2009

Source: Suchith Anand by way of Santiago Borrero



We are pleased to make available the webcasts of presentations (Stream 1) of The First Open Source GIS UK Conference at Centre for Geospatial Science at <http://www.opensourcegis.org.uk/> for the benefit of the wider GIS community.

## [GI2009 Dresden Symposium \(May 2009\) - presentations and posters published](#)

Source: <http://www.epsiplus.net/>

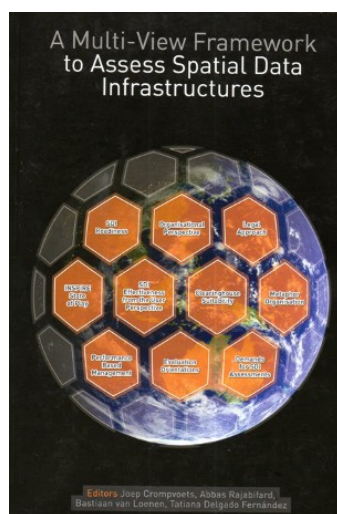
The presentations, posters and a detailed (132 pages) report on the GI2009 Dresden Symposium that was held on the 14 & 15 May 2009 have been [published](#). The presentations cover a range of applications and cross border applications in the border region of Czech Republic, Germany and the Poland. The symposium took place as the INSPIRE Directive came into effect in all European Union Member States. A number of the presentations relate to the implementation of INSPIRE at the regional and local levels.

[\(Back to Top\)](#)

## Articles and Books of the Month

### [A Multi-View Framework to Assess Spatial Data Infrastructures](#)

Source: <http://www.csdila.unimelb.edu.au/>



Edited by: Joep Crompvoets, Abbas Rajabifard, Bastiaan van Loenen, Tatiana Delgado Fernández

This book aims to promote a better understanding of SDI assessment by providing the concepts, demands and implication of SDI-assessments, a compilation of existing approaches to assess SDIs. The book also provides examples to assist practitioners to develop more comprehensive and appropriate evaluations to fit with assessment demands. The book is designed to be a professional resource to strength capacity of information resource management in the context of SDI assessment. Each contribution has come from leaders and researchers who have an interest in SDI design and assessment. Editors are thankful to the members of SPATIALIST, CYTED IDEDES, Centre for Spatial Data Infrastructures and Land Administration in Department of Geomatics (University of Melbourne, Australia), Centre for Geo-information (Wageningen University, The Netherlands), Ruimte voor Geo-Informatie (Space for Geo-Information) The Netherlands, Delft University of Technology (Delft, The Netherlands) and IWT-Flanders, the Institute for the Promotion of Innovation by Science and Technology in Flanders (Belgium) for encouragement and support. You may download the book [here](#).

[\(Back to Top\)](#)

# Global Spatial Data Infrastructure Latin America and the Caribbean Newsletter

## Geospatial Research and Applications

### [IBGE launches 1st Digital Database on the Amazon Topography](#)

Fuente: <http://www.ibge.gov.br/>



The Amazon is not a predominantly flat area. The Amazon floodplain covers only 7% of the approximately five million square kilometers comprised by the region, while 73.78% of the territory is formed by a visibly irregular relief. Within the area covered by these types of landscapes, 16.26% (or 12% of the total area) have a rugged topography, therefore more vulnerable to erosion, especially when there is deforestation. Information such as these can be produced from the Digital Database on Geomorphology of the Amazon, launched in July by the IBGE (Brazilian Institute of Geography and Statistics). The database provides free of charge information via Internet, on the relief types found in the region, consistent with the scale of 1:250.000 (where 1 cm on the map is equivalent to 2.5 kilometers on the ground), at regional and state levels. This information is added to the vegetation data, released by IBGE in 2008; information on soils and geology will be added to the database in 2010. All of this information is generated from the systematic mapping of the institute, in addition to the use of satellite images, and updated bibliographies and studies by other institutions, that are constantly update and in expansion. The database structure allows its manipulation for creating new products derived from data overlay, which may contribute to studies aimed at territorial ordering of the Amazon, among many others, and to support public policies for the region.

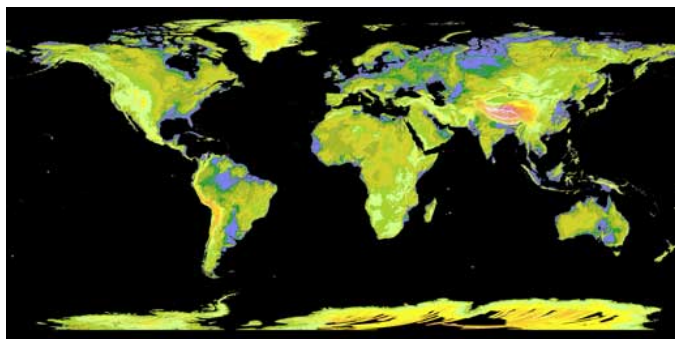
### [SIG CSB Project Soon Finishing](#)

Source: <http://www.icde.org.co/>

Final stage of project "Geographic Information System for the Corporation of Southern Bolivar in Colombia" has begun. The project is developed by the Regional Autonomous Corporation of Southern Bolivar (in Spanish CBS) and the Geographic Institute "Agustin Codazzi" (in Spanish IGAC), and funded by the Ministry of Environment, Housing and Territorial Development (in Spanish MAVDT) through the Environmental Compensation Fund. This inter-administrative agreement arose from the need of designing and implementing a GIS as a base for Natural Resources and the Environment-Quality and Status Assessment Environmental Information System (SIA) of the CSB, Department of Bolivar.

### [Most complete Global Digital Elevation Model \(GDEM\) to the worldwide public is released](#)

Source: <http://www.nasa.gov/>



NASA and Japan's Ministry of Economy, Trade and industry (METI) released the Advanced Spaceborne Thermal Emission and Reflection Radiometer (ASTER) Global Digital Elevation Model (GDEM) to the worldwide public on June 29, 2009. The GDEM was created by processing and stereo-correlating the 1.3 million-scene ASTER archive of optical images, covering Earth's land surface between 83 degrees North and 83 degrees South latitudes. The GDEM is produced with 30-meter (98-foot) postings, and is formatted as 23,000 one-by-one-degree tiles. Previously, the most complete topographic set of data publicly available was from



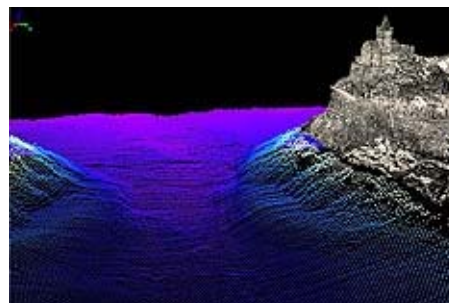
## Global Spatial Data Infrastructure Latin America and the Caribbean Newsletter

NASA's Shuttle Radar Topography Mission. The GDEM is available for download from NASA's EOS data archive and Japan's Ground Data System. [Visualizations of the new ASTER topographic data](#); Data users can [download the ASTER global digital elevation model](#)

### [Data Integration for Coastal Surveying: Combining Laser Scanner and Bathymetric Sensor](#)

Source: <http://www.gim-international.com/>

When surveying the coastline, the integration of bathymetric (below sea level) and laser scanning (above sea level) data causes problems due to the different imaging properties. However, by ensuring that the different data sets have been accurately georeferenced and oriented, a complete and accurate model of the terrain above and below sea level can be obtained. This technique was employed to survey the area of Portovenere in Italy, including the San Pietro church located on a steeply sloping rocky promontory, with positional accuracies in the order of 5cm. The complete article may be found [here](#).



### [Global Land Survey 2010](#)

Source: <http://www.gim-international.com/>

From last June, the ScanEx Research and Development Center takes part in the international project Global Land Survey 2010. The GLS Program is aimed at building global satellite Earth coverage by 2010 and is implemented on the basis of the initiative introduced by NASA and United States Geological Survey (USGS). The satellite coverage will be built on the basis of Landsat 5 and 7 data for the purpose of investigating impacts of human activity as well as natural and climatic changes on Earth. The ScanEx Center is the only Russian company, which participates in the GLS-2010 Project. Starting 2009 the entire imagery archive of the Landsat series satellites operates in the mode of free on-line access. In turn the space information within the framework of the GLS-2010 project will be provided free of charge with minimum time delay after surveying.

[\(Back to Top\)](#)

## GIS Tools, Software, Data

### **GeoNetwork opensource v2.4.0 released**

Source: Jeroen Ticheler



We are proud to announce the release of GeoNetwork opensource 2.4.0. This is a major release for the project. GeoNetwork opensource (<http://geonetwork-opensource.org>) is a standards based geospatial catalog application that helps people and organizations to organize and publish their geospatial data through the web. It is currently used in numerous Spatial Data Infrastructure initiatives across the world. Important improvements have been made to ease of use, advanced metadata editing, performance and interoperability making it one of the most advanced, if not the most advanced geospatial metadata catalog available on the market today. The

software provides an easy to use web interface to search geospatial data across multiple catalogs, combine distributed map services in the embedded map viewer, send annotated interactive maps to friends by email, publish geospatial data using the online metadata editing tools and optionally the embedded GeoServer map server. GeoNetwork opensource is part of the Open Source Geospatial Foundation (OSGeo, <http://www.osgeo.org>) software stack, providing software you can trust to be free, open and sustainable. Voluntary support is provided through mailing lists, websites and online forums.

# Global Spatial Data Infrastructure Latin America and the Caribbean Newsletter

## [Open Source Web Based Geospatial Processing with OMAR](#)

Source: <http://www.directionsmag.com/>



This article provides an overview of OMAR (OSSIM Mapping Archive) web based geospatial processing. OMAR is part of the Open Source Software Image Map ([OSSIM](#)) project under the Open Source Geospatial ([OSGeo](#)) Foundation. The primary contributors of OSSIM make their livings by providing professional services to US Government agencies and programs. OMAR provides one example that open source software (OSS) solutions are increasingly being deployed in US government agencies. We will also summarize the capabilities of OMAR and its plans for near term development. OMAR is a web based system for archival, retrieval, processing, and distribution of geospatial assets. Satellite and aerial images, vector sets, unmanned aerial vehicle (UAV) video sets, as well as user generated tags and reference items can be easily searched and manipulated with the system.

Searching can be performed on the basis of location, time, or any combination of the stored metadata. OMAR is unique in its ability to dynamically process raw materials and create value added products on the fly. Imagery is orthorectified (geometrically corrected), precision terrain corrected, and histogram stretched on demand. [The complete article may be found at: [http://www.directionsmag.com/article.php?article\\_id=3207](http://www.directionsmag.com/article.php?article_id=3207)]

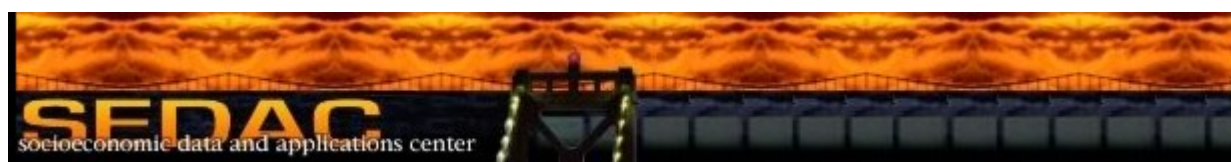
## [GIS Software Download Finder](#)

Source: <http://www.gim-international.com/>

From now on, GIM International is including a guide for GIS software. On this website, you find a guide to GIS software that is available to download for free. You find it in the link 'Downloads' in the left hand navigation bar of the website. Mostly, the software is leading to free viewers, trial versions or open-source software. The download section of GIM International is found at: <http://www.gim-international.com/downloads/index.php>.

## **OGC's Website of the Month**

Source: OGC News July 2009



The Socioeconomic Data and Applications Center (SEDAC) at the Center for International Earth Science Information Network (CIESIN), serves several global datasets [<http://sedac.ciesin.columbia.edu/mapservers/>] via WFS and WMS. To get a quick look at any dataset, the "get map" link brings the dataset into your browser. For GEOSS, CIESIN/SEDAC serves three datasets with WMS 1.1.1:

- GPW Population Data

<http://sedac.ciesin.columbia.edu/mapservers/map/GPWv3?Request=GetCapabilities&Service=WMS&Version=1.1.1>

<http://sedac.ciesin.columbia.edu/mapservers/wfs/GPWv3?Request=GetCapabilities&Version=1.1.1&Service=WMS>

- GRUMP (Global Rural-Urban Mapping Project) Population Data

**SDI-LAC Newsletter**

## Global Spatial Data Infrastructure Latin America and the Caribbean Newsletter

<http://sedac.ciesin.columbia.edu/mapserver/map/GRUMPV1?Request=GetCapabilities&Version=1.1.1&Service=WMS>  
<http://sedac.ciesin.columbia.edu/mapserver/wfs/GRUMPV1?Request=GetCapabilities&Version=1.1.1&Service=WMS>

- Species data

[http://sedac.ciesin.columbia.edu/mapserver/map/SPECIES\\_AMPHIBIANSv1?Request=GetCapabilities&Service=WMS&Version=1.1.1](http://sedac.ciesin.columbia.edu/mapserver/map/SPECIES_AMPHIBIANSv1?Request=GetCapabilities&Service=WMS&Version=1.1.1)

[\(Back to Top\)](#)

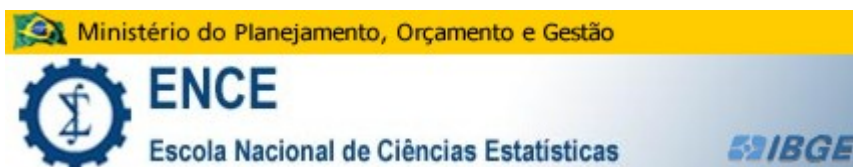
### Training Opportunities

#### [Open Enrollment for the Master Program of ENCE](#)

Source: <http://www.ibge.gov.br/>

The National School of Statistical Sciences (ENCE) linked to the Brazilian Institute of Geography and Statistics (IBGE), has opened enrollment for the master's degree in Population Studies and Social Research. Entries are free

and will be offered up to 30 vacancies. The ENCE is a Federal Institution of Higher Education (free) with proven excellence. Entries can be made between September 8 to **October 2**, by post or at the School's office: [http://www.ence.ibge.gov.br/pos\\_graduacao/mestrado/processo\\_seletivo.asp](http://www.ence.ibge.gov.br/pos_graduacao/mestrado/processo_seletivo.asp)



#### [Professional Master on GIS Management - UNIGIS](#)

Source: <http://www.sigte.udg.edu/>



The enrollment period will remain open until **September 20**. The UNIGIS Master, a distance learning program only in Spanish, has over 10 years of professional training in GIS. Course Schedule runs from October 13 to December 2010.

#### [Winter School on Geoinformatics 2009, Valdivia, Chile](#)

Source: <http://www.snit.cl/>

A Winter School on Geoinformatics will be held in Valdivia, Chile on August 4-7, titled "Introduction to the Use of Radar Images". More details at: <http://www.geo.puc.cl/html/diplomado.html>. For registration and further information please contact: [dcorti@infor.cl](mailto:dcorti@infor.cl)



#### **CATHALAC and FUNIBER launch Masters Program on Climate Change**

Source: CATHALAC list

The Water Center for the Humid Tropics of Latin America and the Caribbean (CATHALAC) and the Ibero-American University Foundation (in Spanish FUNIBER) signed a framework partnership agreement for the establishment of a Masters Program on Climate Change. The objective of this program is to train professionals to respond with excellence to multidisciplinary challenges and opportunities presented by global climate change. Thematic modules comprised by the master's program will be developed in a virtual environment bringing together best teachers, professionals and students from Latin America. A flexible and dynamic program will enable participants to develop thematic modules



## Global Spatial Data Infrastructure Latin America and the Caribbean Newsletter

during any period of the year, starting on January 2010. Registration period for the Masters Program on Climate Change is open on October 2009. For more information, please visit [www.cathalac.org](http://www.cathalac.org) and [www.funiber.org](http://www.funiber.org) or contact: Jennifer Croston, International Cooperation and Development Officer, CATHALAC at: [jennifer.croston@cathalac.org](mailto:jennifer.croston@cathalac.org)

### Third United Nations International UN-SPIDER Bonn Workshop; 21 - 23 October 2009 - Bonn – Germany

Source: Joerg Szarzynski by way of Santiago Borrero



We are pleased to announce the Third United Nations International UN-SPIDER Bonn Workshop: "Disaster Management and Space Technology – From Concepts to Application", which is being jointly organized by the United Nations Office for Outer Space Affairs (UNOOSA), the German Aerospace Center (DLR) and the United Nations Convention to Combat Desertification (UNCCD). The workshop will be held in Bonn, Germany, on 21-23 October 2009 in the UN premises in Bonn. The application should be submitted by email to Mr. Joerg Szarzynski [joerg.szarzynski@unoosa.org](mailto:joerg.szarzynski@unoosa.org) UN-SPIDER Bonn no later than Monday **31 August** 2009. In case you are requesting funding support, please make sure that your application is signed by the Head of the Institution, otherwise it will not be considered. We are also planning the following meeting which is being organized back-to-back with the Third International Bonn Workshop: "United Nations Geographic Information Working Group (UNGIWG) 10th (Anniversary) Plenary" in Bonn, Germany, 19 to 21 October 2009. Further information regarding the agenda and general arrangements, including information concerning the venue of the meeting, will soon be available on the UN-SPIDER Knowledge Portal under <http://www.unspider.org/>.

[\(Back to Top\)](#)

### Funding Opportunities, Awards, Support

#### The Latin American and the Caribbean Water Prizes – PLACA 2009 5th Edition

Source: Roxana Segundo

The Latin American and the Caribbean Water Prizes – PLACA, is an initiative launched in 2005 to promote the International Decade for Action "Water for Life" 2005-2015 proclaimed by the United Nations. PLACA's objectives are to recognize and to share innovative solutions to issues related to integrated water resources management in the Latin America and the Caribbean region. PLACA seeks to honor outstanding local, national and regional efforts and best practices of communities, community-based organizations, non-governmental organizations, businesses, schools, youth movements, journalists, and individuals that serve as examples to halving, by 2015, the world wide proportion of people without sustainable access to safe drinking water and basic sanitation. PLACA is an initiative of CATHALAC in partnership with UNICEF's Regional Office for the Americas and the Caribbean, the Panama Canal Authority, UNEP's Regional Office for Latin America and the Caribbean, and the collaboration of Olga Sinclair, New Concept Publications and Courtyard by Marriott Panama Real Hotel. The 2009 PLACA Water Prize categories include six prizes: Community Award, Business Award, Junior Award,



## Global Spatial Data Infrastructure Latin America and the Caribbean Newsletter

Academic Award, Media Award and a Lifetime Achievement Award. Nominations for the 2009 PLACA Water Prizes must be received by **August 31**, 2009. For more information about PLACA 2009 please visit: <http://www.waterprizes.org/>

### [CapaciNet launches Scholarship Program for Young People in the Americas](#)

Source: OAS, Press Department, Newsletter number 16, June 2009 by way of Santiago Borrero



The Executive Office of the Executive Secretariat for Integral Development (SEDI) of the Organization of American States (OAS), through the project CapaciNet, recently introduced a new Scholarship Program to Support Youth in order to strengthen human and institutional capacities to improve democratic governance. The program has provided five scholarships for training through online courses, in recognition of the efforts of young people in the Talent and Innovation Competition: ICT Americas, organized by the Program for Young Entrepreneurs of the Americas (Young Americas Business Trust -- YABT), which was held last April during the 39th OAS General Assembly in San Pedro Sula, Honduras. During the event on the awards competition, young people interested in contributing to their countries development were invited to participate on courses offered by SEDI on: "Electronic Government", "e-Congress and the Legislative Modernization", "Strategies for Decentralization and Citizen Participation", "Developing Strategies for Electoral Participation", and "Strategies for the Promotion of Transparency, Integrity, and Control of Corruption", among others. The courses are offered as a training activity of SEDI, in response to the 2008 Declaration of Medellín: Youth and Democratic Values. For more information on SEDI's on line training activities, please visit the following website: [www.oas.org/sedi](http://www.oas.org/sedi) or contact: [formacion@oas.org](mailto:formacion@oas.org)

[\(Back to Top\)](#)

### Employment Opportunities

#### **Consultancy opportunity at UNEP-WCMC**

Source: Helena Boniatti by way of Santiago Borrero



## **United Nations Environment Programme World Conservation Monitoring Centre**

The United Nations Environment Programme, World Conservation Monitoring Centre, is seeking two (02) consultants to conduct the following reviews for the "Contribution of the Brazilian protected areas for the national economy" project: ["NationalReviewPA"](#): Review of national initiatives, methodologies, guidelines and assessments on the valuation of ecosystems services and natural resources within and outside protected areas in Brazil. ["InternationaReviewPA"](#): Review of international initiatives, methodologies, guidelines and assessments on the valuation of ecosystems services and natural resources within and outside protected areas. Application deadline is **August 12**, 2009.

## Global Spatial Data Infrastructure Latin America and the Caribbean Newsletter

### [Student Opportunity Announcements -17 Research Positions: In situ sensor development for the marine environment](#)

Source: <http://www.earthworks-jobs.com/>

SENSEnet is an Initial Training Network funded through the Marie Curie Actions in the European Commission Seventh Framework Programme. SENSEnet is aimed at developing a cadre of young scientists to place the European Community at the forefront of in situ sensor development in the marine environment. The young researchers will work across the European Community with 15 of the leading research groups at some of the most respected research institutes across Europe. Uniquely, the project involves two of the leading players in the commercial side of sensor development, marketing and deployment. Researchers can be nationals of any country other than the country of the premises of the host organization where they will carry out their project. Deadline: **August 24, 2009**. The full description of all of these opportunities can be found by following the links from the website for the project at <http://www.eu-sensenet.net>

[\(Back to Top\)](#)

### Other

### [National Geographic Society and ESRI Announce International GeoMentor Program](#)

Source: <http://www.esri.com/>

Initiative Aimed at Increasing Geographic Literacy in Elementary and Secondary Education. The newly established GeoMentor program was jointly announced by ESRI and the National Geographic Society (NGS) on July 13, 2009, during the Plenary Session of ESRI's 29th annual International User Conference in San Diego. The program will enlist people who use geographic information to help educators and students better understand its numerous applications. These GeoMentors adopt a classroom or afterschool program, helping both the teacher and students comprehend the many ways geography and geographic information systems (GIS) can help us better understand the interrelatedness of objects and events in our world. Says Daniel C. Edelson, vice president for education, National Geographic Society: "The rate of geoliteracy in the United States -meaning the number of people who can synthesize geographic information from a variety of sources and draw a sound conclusion- is frighteningly low. If it is allowed to continue, the inability of most Americans to do even basic analysis of geographic information will have a profound impact on our ability to compete economically, maintain our security, and sustain our environment in coming decades." The GeoMentor Web site has tools for pairing mentors with educators, finding activities, acquiring resources from both the National Geographic Society and ESRI, and sharing stories. Additional details can be found at [www.geomentor.org](http://www.geomentor.org).

### [Adjusting EU ICT standardization policy to the realities of 21 century](#)

Source: <http://7thspace.com/>

The landscape for ICT (Information and Communication Technology) standardization has dramatically changed over the last decade. Alongside the traditional standard setting organizations, specialized and mostly global fora and consortia have become more active and several have emerged as world-leading ICT standards development bodies, such as those responsible for the standards covering the internet and the World Wide Web. This development is not reflected in the EU standardization policy. Without decisive action the EU will fail to master the information society, will not realize a number of important European policy goals which require interoperability such as e-health, accessibility, security, e-business, e-government, transport, etc, and will face obstacles to being a driving force in the development and promotion of international standards for personal data protection as set out in the Communication on the Stockholm programme. The reforms proposed should improve the possibilities to use and reference EU recognized standards in legislation and public procurement. The proposed reforms will also give the EU a bigger influence on international standard setting in the field of ICT.

[\(Back to Top\)](#)



# Global Spatial Data Infrastructure Latin America and the Caribbean Newsletter

## Americas: Conferences, SDI Events – Year 2009

[Year 2009](#) January February March April May June July [August](#) [September](#) [October](#) [November](#) [December](#)  
[Year 2010](#) [January](#) [February](#) [March](#) [April](#) May [June](#) [July](#) August [September](#) [October](#) [November](#) December

AUGUST 2009		
2-5	Foz do Iguaçu PR, Brazil	<a href="#">III International Conference on Urban Development in Border Towns</a> Details: <a href="http://www.iabpr.org.br/3conferencia">http://www.iabpr.org.br/3conferencia</a> E-mail: <a href="mailto:inscricoes@alvoeventos.com.br">inscricoes@alvoeventos.com.br</a>
2-6	San Diego CA, USA	<a href="#">SPIE Conference "Videometrics X"</a> Dr. Fabio Remondino, E-mail: <a href="mailto:fabio@geod.baug.ethz.ch">fabio@geod.baug.ethz.ch</a>
2-15	Rio de Janeiro, Brazil	<b>XXVII General Assembly International Astronomical Union (IAU)</b> Web: <a href="http://www.iau.org">www.iau.org</a>
3-7	New Orleans LA, USA	<a href="#">SIGGRAPH 2009</a>
4 <i>*NEW*</i>	Greenwood Village CO, USA	<a href="#">Rocky Mountain MapInfo Users Group</a>
4-6	Fairbanks AK, USA	<a href="#">Circumpolar Conference on Geospatial Sciences and Applications</a>
4-6	Providence RI, USA	<a href="#">2009 URISA/NENA Addressing Conference</a>
6-7	Guatemala City, Guatemala	<a href="#">2009 ESRI Central America User Conference</a>
10-12	Raleigh NC, USA	<a href="#">3rd Annual HAZUS Conference</a>
10-13	Washington DC, USA	<a href="#">AUVSI's Unmanned Systems North America 2009</a>
10-14 <i>*NEW*</i>	New York, USA	<a href="#">9th UN Regional Cartographical Conference for the Americas</a>
12 <i>*NEW*</i>	USA	<a href="#">Pre-Bid Conference and Webinar on: Developing and Managing Road Environment GIS for SHRP 2 Naturalistic Driving Study</a>
12-14	Fairfax VA, USA	<a href="#">The 17th International Conference on Geoinformatics (Geoinformatics 2009)</a> Contact: <a href="mailto:info@geoinformatics2009.org">info@geoinformatics2009.org</a>
19-22	New Orleans LA, USA	<a href="#">The Tenth Crime Mapping Research Conference</a>
24-26	Houston TX, USA	<a href="#">Oil and Gas Boot Camp™</a>

## Global Spatial Data Infrastructure Latin America and the Caribbean Newsletter

24-28	Salvador Bahia, Brazil	<a href="#">11th International Congress of the Brazilian Geophysical Society (SBGf)</a> E-mail: <a href="mailto:salvador2009@sbgf.org.br">salvador2009@sbgf.org.br</a>
August 31 – September 4	Buenos Aires, Argentina	<a href="#">SIRGAS Meeting 2009</a> In the framework of the International Association of Geodesy Scientific Assembly IAG 2009
August 31 – September 4	Buenos Aires, Argentina	<a href="#">International Association of Geodesy Scientific Assembly IAG 2009 "Geodesy for Planet Earth"</a> Contact: Dr. Charles K Toth- /, E-mail: <a href="mailto:toth@cfm.ohio-state.edu">toth@cfm.ohio-state.edu</a>

### SEPTEMBER 2009

2-3	Sao Paulo, Brazil	<a href="#">Interop</a>
7-11	Uberlândia MG, Brazil	<a href="#">II International Congress and IV National Symposium on Geography of Health</a> Details: <a href="http://www.geosaude.com.br/">http://www.geosaude.com.br/</a>
8-11 <b>*NEW*</b>	Córdoba, Argentina	<a href="#">1st National and International Congress on Cadastre in Argentina: Cadastre as a Base for Strategic Development Planning for the Peoples"</a> <a href="#">2nd Provincial Meeting on Cadastre – Cordoba: Cadastre as Information Source, Fostering Juridical Security and Social Equity</a>
8-11 <b>*NEW*</b>	Santa Rosa, La Pampa, Argentina	<a href="#">2nd Geography Congress of National Universities</a>
9-10 <b>*NEW*</b>	Washington D.C., - USA	<a href="#">Gov 2.0 Summit: The Platform for Change</a>
10-11	Regina SK, Canada	<a href="#">ESRI Regional User Conference</a>
13-15 <b>*NEW*</b>	Albuquerque NM, USA	<a href="#">IMTA (Americas) Conference &amp; Trade Show 2009</a>
13-16	Columbus OH, USA	<a href="#">APWA's 2009 International Public Works Congress and Expo</a>
13-17	Houston TX, USA	<a href="#">GIS for Oil &amp; Gas Conference and Exhibition</a>
14-16	National Harbor, MD, USA	<b>25th Annual Air &amp; Space Conference and Technology Exposition</b> Details: <a href="http://www.afa.org/events/conference/2009">www.afa.org/events/conference/2009</a>
15-17	Loveland CO, USA	<a href="#">GIS in the Rockies</a>
15-18	São Paulo SP, Brazil	<a href="#">First International Congress of Underground Environment</a> Details: <a href="http://www.abas.org/cimas/">http://www.abas.org/cimas/</a> E-mail: <a href="mailto:cimas@abas.org">cimas@abas.org</a>

## Global Spatial Data Infrastructure Latin America and the Caribbean Newsletter

16-18	Denver CO, USA	<a href="#">GIS in the Rockies</a>
17-18	Edmonton AB, Canada	<a href="#">ESRI Regional User Conference</a>
21-22 <b>*NEW*</b>	Altamonte Springs FL, USA	<a href="#">2009 Central Florida GIS Workshop</a>
21-23	Nashville TN, USA	<a href="#">2009 ESRI Health GIS Conference</a>
22-23	Montréal QC, Canada	<a href="#">ESRI Regional User Conference</a>
22-23	Plymouth MI, USA	<a href="#">PLM Road Map 2009</a>
22-24 <b>*NEW*</b>	San Jose CA, USA	<a href="#">MetaPlaces09; Beyond Location and Context</a>
September 27 - October 4	Morelia, Michoacán, México	<a href="#">Multidisciplinary International Volcanology Congress to Commemorate the 250th Anniversary of Volcán Jorullo's Birth in Michoacán, México</a> E-mail: <a href="mailto:csiebe@geofisica.unam.mx">csiebe@geofisica.unam.mx</a> / <a href="mailto:m.guilbaud@geofisica.unam.mx">m.guilbaud@geofisica.unam.mx</a> / <a href="mailto:gbocco@ciga.unam.mx">gbocco@ciga.unam.mx</a> / <a href="mailto:mtramirez@berkley.edu">mtramirez@berkley.edu</a> / <a href="mailto:vgmonroy@zeus.umich.mx">vgmonroy@zeus.umich.mx</a>
28-29	Vancouver BC, Canada	<a href="#">ESRI Regional User Conference</a>
28-30 <b>*NEW*</b>	Piracicaba-SP, Brazil	<a href="#">First Symposium on GIS as a tool for environmental solutions of rural and urban areas</a>
September 29 - October 2 <b>*NEW*</b>	Quito, Ecuador	<a href="#">UN-SPIDER Regional Workshop: "Space Applications for Disaster Risk Management and Emergency Response in Latin America"</a>
September 29 - October 2	Anaheim CA, USA	<a href="#">URISA's 47th Annual Conference &amp; Exposition</a>
September 30 - October 1	Penticton BC, Canada	<a href="#">ESRI Regional User Conference</a>
30 <b>*NEW*</b>	São Paulo – SP, Brazil	<a href="#">1001 Utilities from satellite images - Discover how orbital and aerial images can extend the results of your company</a>
September 30 - October 2 <b>*NEW*</b>	Buenos Aires, Argentina	<a href="#">First Latin American and Caribbean gvSIG Users Working Days: Cooperating to Grow</a>
September 30 - October 2	Santa Catarina, Brazil	<a href="#">CoastGIS 2009, V Congress on Planning and Management of Coastal Zones of the Portuguese-speaking countries</a> Contact: <a href="mailto:contato@coastgis.com.br">contato@coastgis.com.br</a>



# Global Spatial Data Infrastructure Latin America and the Caribbean Newsletter

## OCTOBER 2009

4-7	Campos Do Jordão, São Paulo, Brazil	<a href="#">Latin American Conference IALE 2009</a> "Landscape Ecology in Latin America: Challenges and Perspectives" Contact: Congress Secretariat and Information E-mail: <a href="mailto:ialebr2009@eventus.com.br">ialebr2009@eventus.com.br</a>
5-7	Curitiba, Brazil	<a href="#">Meeting of the Global Partnership on Cities and Biodiversity</a>
5-7	Westin Westminster CO, USA	<a href="#">Location Intelligence 2009</a>
5-9	Antigua, Guatemala	<a href="#">Iberoamerican Workshop on Geographic Information Systems applied to Renewable Energy</a>
6-7	Toronto, Ontario, Canada	<a href="#">ESRI Regional User Conference</a>
6-9	Santa Maria RS, Brazil	<a href="#">7<sup>th</sup> Working day on Remote Sensing Education in the frame of Mercosur</a> , Web Page: <a href="http://www.ltid.inpe.br/selper">http://www.ltid.inpe.br/selper</a> E-mail: <a href="mailto:tania@ltid.inpe.br">tania@ltid.inpe.br</a>
6-10	Bogotá D.C., Colombia	<b>IV Ibero-American Congress on Development and Environment</b> Web: <a href="http://www.cisdaiv.unal.edu.co/">http://www.cisdaiv.unal.edu.co/</a> Contact: María Andrea García Valencia, Nohra León y Norma Sabogal; Correos electrónicos: <a href="mailto:infocisdaiv@javeriana.edu.co">infocisdaiv@javeriana.edu.co</a> , <a href="mailto:documentocisdaiv@javeriana.edu.co">documentocisdaiv@javeriana.edu.co</a> , <a href="mailto:cursocisdaIV@unal.edu.co">cursocisdaIV@unal.edu.co</a>
7-9	Bogotá, Colombia	<a href="#">ESRI Latin American User Conference</a> Details: <a href="http://www.procalculooprosis.com/lauc09/">www.procalculooprosis.com/lauc09/</a>
8-25	Buenos Aires, Argentina	<a href="#">13<sup>th</sup> World Forestry Congress</a>
10-15 <b>*NEW*</b>	Winnipeg, Canada	<a href="#">ESRI Regional User Conference</a>
11-14	Atlanta GA, USA	<a href="#">2009 Electric &amp; Gas User Group (EGUG) Conference</a> Details: <a href="http://www.esri.com/egug">www.esri.com/egug</a>
11-15	San Francisco CA, USA	<a href="#">Oracle Open World</a>
13-16	SJ Campos, SP, Brazil	<b>Workshop on Space Weather</b> Information: Hisao Takahashi / E-mail: <a href="mailto:hisaotak@laser.inpe.br">hisaotak@laser.inpe.br</a>
15-16	Winnipeg MB, Canada	<a href="#">ESRI Regional User Conference</a>
16-17	Miami FL, USA	<a href="#">Mapping Florida Communities: An Introduction to GIS &amp; Community Analysis - One Day Workshops</a>
16-19	San Antonio TX, USA	<a href="#">ASPRS/MAPPS 2009 Fall Conference</a> E-mail: <a href="mailto:asprs@asprs.org">asprs@asprs.org</a>
18-21	San Antonio TX, USA	<a href="#">GEOINT 2009</a>

## Global Spatial Data Infrastructure Latin America and the Caribbean Newsletter

19-20	Caracas, Venezuela	<b>WG VI/5 Workshop "Airborne Laser Scanning &amp; Data Processing"</b> Web: <a href="http://www.fii.org/fii/html/jornadas.html">www.fii.org/fii/html/jornadas.html</a> Contact: Emmanuel Baltsavias(Chair WG VI/5) E-mail: <a href="mailto:manos@geod.baug.ethz.ch">manos@geod.baug.ethz.ch</a>
19-23	Aguascalientes, México	<b>2009 National Geography Convention</b> , Further information: <a href="http://mapserver.inegi.org.mx/geografia/espanol/eventos/cng2009/">http://mapserver.inegi.org.mx/geografia/espanol/eventos/cng2009/</a> E-mail: <a href="mailto:convencion.geografia@inegi.org.mx">convencion.geografia@inegi.org.mx</a>
19-23	Florianópolis - SC Brazil	<b>Geography: Teaching and Performance</b> Further Information: <a href="http://www.simgeo2009.cjb.net">http://www.simgeo2009.cjb.net</a> E-mail: <a href="mailto:simgeo2009@gmail.com">simgeo2009@gmail.com</a>
20-21	Ottawa, Ontario, Canada	<b>ESRI Regional User Conference</b>
21	São Paulo, Brazil	<b>InfoGEO and InfoGPS Seminar – Transportation Management</b> Web page: <a href="http://www.mundogeo.com/seminarios/GF/">http://www.mundogeo.com/seminarios/GF/</a> E-mail: <a href="mailto:seminario@mundogeo.com">seminario@mundogeo.com</a>
21-22 <i>*NEW*</i>	Caracas, Venezuela	<b>3<sup>rd</sup> National Working Days on Geoinformatics</b>
21-23	Pueblo CO, EUA	<b>ESRI Southwest User's Group Conference - 2009</b>
23-24	Tallahassee FL, USA	<b>Mapping Florida Communities: An Introduction to GIS &amp; Community Analysis - One Day Workshops</b>
25-29	Washington, DC, USA	<b>8th International Semantic Web Conference (ISWC 2009)</b>
26-30	Quito, Ecuador	<b>19<sup>th</sup> General Assembly and Technical Consultative Meeting of PAIGH</b> Detailed information available at: <a href="http://www.ipgh.org/19-Asamblea-General/default.htm">http://www.ipgh.org/19-Asamblea-General/default.htm</a>
27-30	Popayán, Colombia	<b>XVIII Colombian Congress of Geography</b> Contact: Martha Martínez Rubiano E-mail: <a href="mailto:ccgeografia2009@unicauca.edu.co">ccgeografia2009@unicauca.edu.co</a> , <a href="mailto:ccgeografia2009@gmail.com">ccgeografia2009@gmail.com</a>
28-29	Halifax NS, Canada	<b>ESRI Regional User Conference</b>
28-31	Chihuahua, Mexico	<b>16th Symposium on Geography Teaching in Mexico, Chihuahua 2009</b> Contact: Álvaro Sanchez Crispin - <a href="mailto:asc@igg.unam.mx">asc@igg.unam.mx</a>

# Global Spatial Data Infrastructure Latin America and the Caribbean Newsletter

## NOVEMBER 2009

2-6	Quebec, Canada	<a href="#">ISO/TC 211 Meeting week</a>
3-4	Calgary, Alberta, Canada	<b>2009 GIS for Oil &amp; Gas Calgary Conference</b> Details: <a href="http://gita.org/events/ogca/2009/index.asp">gita.org/events/ogca/2009/index.asp</a>
3-4	St. John's NL, Canada	<a href="#">ESRI Regional User Conference</a>
3-4	Baltimore MD, USA	<a href="#">Smart Grid Road Show</a>
4-6 <b>*NEW*</b>	Tucson AZ, USA	<a href="#">AGIC 2009: Geospatial Education and Training Symposium</a>
4-6	Seattle WA, USA	<a href="#">17th ACM SIGSPATIAL International Conference on Advances in Geographic Information Systems (ACM GIS 2009)</a>
5	Orlando FL, USA	<a href="#">Mapping Florida Communities: An Introduction to GIS &amp; Community Analysis - One Day Workshops</a>
7	Jacksonville FL, USA	<a href="#">Mapping Florida Communities: An Introduction to GIS &amp; Community Analysis - One Day Workshops</a>
7-11	Corumbá MS, Brazil	<a href="#">2º GeoPantanal – Symposium on Swamp Geo-technologies</a>
9-12	Gramado, Brazil	<a href="#">3rd International Workshop on Semantic &amp; Conceptual Issues in GIS (SeCoGIS2009) in conjunction with the 28th International Conference on Conceptual Modeling (ER2009)</a> Contact: Prof. Esteban Zimanyi E-mail: <a href="mailto:estebanzimanyi@gmail.com">estebanzimanyi@gmail.com</a>
10-12	St. Petersburg FL, USA	<a href="#">2009 GIS in Transit Conference</a>
10-13 <b>*NEW*</b>	Ouro Preto, Brazil	<a href="#">3rd Portuguese-Brazilian Symposium on Historic Cartography</a>
14-19	San Antonio TX, USA	<a href="#">MAPPS/ASPRS Joint Specialty Conference</a>
15-21	Santiago, Chile	<a href="#">ICC2009- 24th International Cartographic Conference 2009</a> <a href="http://www.icc2009.cl/">http://www.icc2009.cl/</a>
15-21	Kingston, Jamaica	<a href="#">Geography Awareness Week</a>
16-19	San Antonio TX, USA	<a href="#">ASPRS/MAPPS 2009 Fall Conference</a>
16-20	New York NY, USA	<a href="#">Interop New York</a>

## Global Spatial Data Infrastructure Latin America and the Caribbean Newsletter

<b>18-20</b> <b>*NEW*</b>	St. Croix, Virgin Islands	<a href="#">5th Annual GIS Conference</a>
<b>November 29<sup>th</sup> - December 4<sup>th</sup></b>	Las Vegas NV, USA	<a href="#">Autodesk University 2009 Exhibition</a>

### DECEMBER 2009

<b>1-4</b>	Las Vegas NV, USA	<a href="#">Autodesk University</a>
<b>7-11</b>	Mountainview CA, USA	<a href="#">OGC Technical and Planning Committee Meeting</a>
<b>14-18</b>	San Francisco CA, USA	<b>Fall Meeting AGU</b> Web: <a href="http://www.agu.org/meetings.shtml">http://www.agu.org/meetings.shtml</a>

### YEAR 2010

[Year 2010](#) [January](#) [February](#) [March](#) [April](#) [May](#) [June](#) [July](#) [August](#) [September](#) [October](#) [November](#) [December](#)

### JANUARY 2010

<b>5-7</b>	Cuenca, Ecuador	<a href="#">Sixth International Conference on Environmental, Cultural, Economic and Social Sustainability</a>
<b>23-28</b>	San Francisco CA, USA	<a href="#">SPIE Photonics West</a> Contact: <a href="mailto:peterb@spie.org">peterb@spie.org</a>

### FEBRUARY 2010

<b>10-15</b>	St. Maarten, Netherlands Antilles	<a href="#">2nd International Conference on Advanced Geographic Information Systems, Applications, and Services</a> <a href="#">GEOProcessing 2010</a>
--------------	-----------------------------------	---

### MARCH 2010

<b>23-25</b>	Tampa FL, USA	<a href="#">DistribuTECH 2010 Conference &amp; Exhibition</a>
--------------	---------------	---

### APRIL 2010

<b>18-22</b>	Kansas City MO, USA	<a href="#">MAGIC 2010 Symposium</a>
<b>25-29</b>	Phoenix AZ, USA	<a href="#">GITA's 2010 Geospatial Infrastructure Solutions Conference</a>
<b>26-30</b>	San Diego CA, USA	<a href="#">ASPRS Annual Conference</a> E-mail: <a href="mailto:asprs@asprs.org">asprs@asprs.org</a>



## Global Spatial Data Infrastructure Latin America and the Caribbean Newsletter

### JUNE 2010

<b>16-18</b>	Calgary, Canada	<a href="#"><u>Commission I Symposium "Image Data Acquisition - Sensors &amp; Platforms"</u></a> Contact: Naser El-Sheimy (President Commission I) E-mail: <a href="mailto:elsheimy@ucalgary.ca">elsheimy@ucalgary.ca</a>
<b>21-25</b> <b>*NEW*</b>	Santo Domingo, Dominican Republic	<a href="#"><u>International Meeting "Virtual Educa" – 2010</u></a>

### JULY 2010

<b>26-30</b>	Los Angeles CA, USA	<a href="#"><u>SIGGRAPH 2010</u></a>
--------------	------------------------	--------------------------------------

### SEPTEMBER 2010

<b>19-24</b>	Montreal, Canada	<a href="#"><u>IWA World Water Congress and Exhibition</u></a>
--------------	------------------	--

### OCTOBER 2010

<b>18-22</b>	Singapore, Singapore	<a href="#"><u>GSDI 12 World Conference 2010: Realizing Spatially Enabled Societies</u></a>
<b>18-22</b> <b>*NEW*</b>	Orlando FL, USA	<a href="#"><u>E-Learn 2010</u></a>

### NOVEMBER 2010

<b>16-18</b>	Orlando FL, USA	<a href="#"><u>Commission IV Symposium "Geodatabases &amp; Digital Mapping"</u></a> Marguerite Madden (President Commission IV) E-mail: <a href="mailto:mmadden@uga.edu">mmadden@uga.edu</a>
--------------	-----------------	--

[\(Back to Top\)](#)

**Please mention SDI-LAC as source of information in any correspondence you may have on items in this issue**

To subscribe to SDI-LAC, please do so online at:  
<http://www.gsdi.org/newslist/gsdisubscribe.asp>  
Nancy Aguirre, PAIGH, Editor [cnaguirre@ipgh.org](mailto:cnaguirre@ipgh.org)  
Global Spatial Data Infrastructure Association,  
<http://www.gsdi.org>

**DISCLAIMER:**

GSDI, PAIGH and the Editor will not be held liable for any errors, mistakes, misprints or incorrect information. Copyright © 2009. All rights reserved.